



**Office of the Planning Commission**

City of Baton Rouge and Parish of East Baton Rouge  
Post Office Box 1471, Baton Rouge, Louisiana 70821  
or  
1100 Laurel Street, Suite 104, Baton Rouge, LA 70802  
Phone (225) 389-3144 Fax (225) 389-5342

Frank M. Duke, FAICP  
Planning Director

March 7, 2019

TO: Planning Commission  
THROUGH: Frank M. Duke, FAICP, Planning Director *[Signature]*  
FROM: Gilles Morin, AICP, CFM *[Signature]*  
SUBJECT: TA-6-19, Chapter 17, Parking

Application Summary			
Applicant	Planning Commission	Submittal Date	December 15, 2018
Code Section(s)	Chapter 17, Parking		
Areas Affected	Parishwide		
Planning Commission Meeting Date	March 18, 2019	Metropolitan Council Meeting Date	April 17, 2019
Request			
Summary of Change	This amendment repeals Chapter 17, Parking, to add the guest parking requirements for townhome developments that are currently located in Chapter 4, Permits and Final Plat Approval		
Findings			
Approval is recommended, based on consistency with the comprehensive plan and the need to simplify the Unified Development Code			

**Case History**

- The need to simplify the Unified Development Code (UDC) was recognized during the development of FUTUREBR
- As part of the update of Chapter 4, Permits and Final Plan Approval, parking requirements for townhome developments that are not located in Chapter 17, Parking, were discovered

**Comprehensive Plan Consistency**

- These changes are consistent with the following provisions of FUTUREBR:
  - Land Use Action 6.1.1, which calls for ensuring regulatory processes are responsive, efficient, and customer friendly; and,
  - Land Use Action 6.1.2, which calls for making the UDC more customer friendly

**Analysis**

- This amendment adds the townhome parking requirement for guest parking that is currently found in Chapter 4 to the requirements of Chapter 17
- Adding the requirement ensures that all parking requirements are located in one place in the UDC

---

**Community Outreach/Notification**

- Draft language was provided to the Growth Coalition and the Federation of Greater Baton Rouge Civic Associations on January 3, 2019
- Staff report will be available for public review on March 7, 2019 at <http://la-batonrouge.civicplus.com/AgendaCenter/Planning-Commission-12>
- Legal advertisement was published in the Advocate on March 8, 12, and 14, 2019

**Findings**

Approval is recommended, based on consistency with the comprehensive plan and the need to simplify the Unified Development Code

# Chapter 17

## PARKING AND LOADING

---

### **Section 17.1 Purpose**

The purpose of this chapter is to reduce hazards to public safety and to ensure efficient traffic flow by establishing standards for motor vehicle parking, bicycle parking and loading areas.

### **Section 17.2 Applicability**

#### **Section 17.2.1 General**

- A. Except where expressly provided for otherwise, all uses in all zoning districts shall provide off-street parking as set forth in this chapter.
- B. No parking area, driveway, or access shall be constructed or expanded except in accordance with this ordinance without regard to whether it is used to provide required parking spaces.

#### **Section 17.2.2 Off-street Parking Credit for Older Buildings and Uses**

In order to encourage the reuse of existing buildings, any building constructed prior to November 20, 1996 having fewer spaces than required shall be credited with the parking required for the last legally permitted use without regard to the number of parking spaces, if any, that actually exist on the site.

#### **Section 17.2.3 Adjustments to Requirements**

In the event there is any conflict between the parking requirements set forth in the regulations of any applicable overlay district and those found in this chapter, the regulations of the specific overlay district shall apply.

### **Section 17.3 General Provisions**

#### **Section 17.3.1 Zoning Classification**

All parking areas shall be located within a district which permits the use that such parking serves, or in a district that permits parking as a principle use.

#### **Section 17.3.2 Parking Plan**

In the event that the Planning Director determines that the evaluation of compliance with the parking requirements of this ordinance requires a parking plan, no new use may commence until a plan, drawn to scale and showing parking facilities and spaces, is provided and it has been determined that the parking provided is sufficient.

#### **Section 17.3.3 Use of Parking Spaces**

Required parking spaces shall not be used for the storage or sale of merchandise, vehicles for sale, or vehicle repair. Spaces allocated for these activities shall be designated on a parking plan.

#### **Section 17.3.4 Multiple Uses on Same Lot**

When computing the number of parking spaces required on a lot with more than one use, the total number of required spaces shall be the sum of the number of parking spaces required for each use evaluated individually, including any adjustments made under the alternative parking provisions of Section 17.4.1B, Motor Vehicle Parking Modifications

**Section 17.3.5 Fractional Spaces**

When determination of the number of parking or loading spaces required by this ordinance results in a fractional number, any fraction shall be rounded up to the nearest whole number.

**Section 17.4 Motor Vehicle Parking Requirements**

**Section 17.4.1 Minimum Motor Vehicle Parking**

**A. Standard Requirements**

Every use shall include the number of motor vehicle parking spaces indicated under the classifications and formulas set forth in Table 17.A, Minimum Parking Requirements, below, except in the C-5 zoning district, where no parking shall be required.

**Table 17.A  
Minimum Parking Requirements**

Use	Rural and Suburban	Urban/Walkable	Downtown	Notes
<b>Residential Uses</b> (except as listed below)	2 per unit		1 per unit	No spaces required for existing lots of record less than 30 feet in width (except townhomes)
Fraternity/Sorority	2 per bedroom		2 per bedroom	
Group living	1 per 300 SF of GFA		1 per 300 SF of GFA	
Multifamily (Studio, 1 bedroom)	1 per unit			
Multifamily (2 bedroom)	2 per unit	1.5 per unit	1 per unit	
Multifamily (3 bedroom)	2.5 per unit	2 per unit	1 per unit	
Multifamily (4 bedroom)	4 per unit + 10% additional spaces		1 per unit	
Townhouse	2.25 per unit		1 per unit	
<b>Office Uses</b> (except as listed below)	1 per 300 SF of GFA	1 per 400 SF of GFA		
Medical Office/Clinic	1 per 200 SF of GFA	1 per 250 SF of GFA		
Veterinary Office	1 per 250 SF of GFA	1 per 350 SF of GFA		
<b>Commercial Uses</b> (except as listed below)	1 per 250 SF of GFA	1 per 330 SF of GFA		
Antique Store	1 per 500 SF of GFA			
Art Gallery and Studio	1 per 500 SF of GFA			
Bed and Breakfast	1 per guestroom + residential required parking	1 per guestroom		

**Table 17.A (cont'd)**  
**Minimum Parking Requirements**

<b>Use</b>	<b>Rural and Suburban</b>	<b>Urban/Walkable</b>	<b>Downtown</b>	<b>Notes</b>
<b>Commercial Uses (continued)</b>				
Building Material Sales	1 per 500 SF of GFA			
Car Wash (self-service)	1 per bay			
Day Care Facility	1 per 300 SF of GFA	1 per 400 SF of GFA		
Furniture Store	1 per 500 SF of GFA	1 per 1,000 SF of GFA		
Gaming	1 per 50 SF floor area + 1 per 100 SF employee area			
Health and Fitness Facility	1 per 150 SF of GFA	1 per 250 SF of GFA		
Heavy Equipment Sales and Service	1 per 500 SF of GFA			
Hotel and Motel	1 per guestroom + 1 per 300 SF conference, banquet, restaurant	1 per guestroom + 1 per 400 SF conference only		
Kennel	1 per 400 SF of GFA			
Mini-storage	3 spaces + 1 per 100 storage units			
Office/Warehouse	1 per 300 SF GFA office/sales + 1 per 4,000 GFA storage/inventory space			Were the use is a combination and neither clearly predominates
Reception Hall	1 per 50 SF of assembly floor area			
Restaurant and Bar	1 per 150 SF of GFA	1 per 250 SF of GFA		Parking required for active patio and outdoor seating areas when provided
Theater	1 per 5 seats	1 per 7 seats		
Vehicle Sales	1 per 500 indoor SF of GFA + 1 per 10,000 SF outdoor lot area + 3 per repair bay			
Vehicle Service	3 per bay			
<b>Public/Institutional Uses (except as listed below)</b>	as determined by the Planning Director			
Community Center	1 per 50 SF of assembly floor area			
Convention Center	1 per 50 SF of assembly floor area	1 per 65 SF of assembly floor area		
Hospital	1 per 400 SF of GFA	1 per 500 SF of GFA		
Library and Museum	1 per 500 SF of GFA			
Passenger Terminal (airport, bus/train)	1 per 500 SF of passenger seating area	1 per 1,000 SF of passenger seating area		

**Table 17.A (cont'd)  
Minimum Parking Requirements**

<b>Use</b>	<b>Rural and Suburban</b>	<b>Urban/Walkable</b>	<b>Downtown</b>	<b>Notes</b>
<b>Public/Institutional Uses (continued)</b>				
Religious Institution	1 per 50 SF of assembly floor area	1 per 65 SF of assembly floor area		
<b>Industrial Uses (except as listed below)</b>	1 per 600 SF of GFA (office) + 1 per 4,000 SF of GFA (non-office)		Where the principal use is warehouse or industrial	
Warehouse and Wholesale	1 per 1,250 SF of GFA			

**B. Motor Vehicle Parking Modifications**

The Planning Director may modify the parking requirements in Table 17.A, Minimum Parking Requirements, when an applicant submits parking data illustrating that the standards do not accurately apply to a specific development. The data submitted for an alternative parking plan shall include, at a minimum, the size and type of the proposed development, and the anticipated peak and average parking loads of all uses. The Planning Director may approve a parking requirement that is based on:

1. An analysis conducted using the Urban Land Institute’s data and methodology as described in the most recent version of the publication *Shared Parking*; or,
2. The data and methodology as described in the latest version of the Institute of Transportation Engineers publication *Parking Generation*; or,
3. An alternative analysis that the Planning Director deems to have met the requirements of this section.

**Section 17.4.2 Maximum Motor Vehicle Parking**

In order to minimize the adverse impacts caused by improving large areas with impervious surfaces, including increased storm water run-off, urban heat island effects, and nonpoint source pollution, excess parking shall not exceed 125 percent of the minimum parking requirement unless:

- A. The development utilizes pervious paving materials for the excess parking;
- B. Alternative methods that use vegetative plantings to capture and filter the first flush of a 25-year storm event, such as rain gardens, infiltration trenches, or similar methods approved by the Director of Development, are used; or,
- C. Structured parking or new parking spaces located on-street represent the excess parking spaces provided.

**Section 17.4.3 Handicapped Accessible Parking**

Every use shall include the number of handicapped accessible parking spaces set forth in Table 17.B, Handicap Accessible Parking Requirements, below. The location and design of such spaces shall conform to the requirements of the Americans with Disabilities Act.

**Table 17.B  
Handicapped Accessible Parking Requirements**

<b>Total Parking Spaces</b>	<b>Required Handicapped Accessible Parking Spaces</b>
1—25	1
26—50	2
51—75	3
76—100	4
101—150	5
151—200	6
201—300	7
301—400	8
401—500	9
501-1,000	2% of total
over 1,000	20 plus one for each 100 standard spaces over 1,000

**Section 17.4.4 Motor Vehicle Parking Reductions**

The following reductions are available upon a showing that the required conditions have been met.

**A. Transit Availability**

Locations within a 1000-foot walking distance of a transit stop approved by the transit provider providing both shade and seating may reduce the total number of required parking spaces by 5 percent. Walking distance shall be measured along a clear walking path along sidewalks and pathways, including designated crosswalks, from the primary entrance of the use to the transit boarding location.

**B. Structured Parking**

Where parking is provided in a structure, the required total number of spaces may be reduced by 10 percent.

**C. On-Street Parking (Non-Residential Only)**

On-street parking located at curb locations contiguous to a development site may be used to reduce required on-site parking except in locations within 200 feet of any property zoned C-5, as described below:

**1. Existing On-Street Parking**

The amount of off-street parking may be reduced by one space for every two existing on-street parking spaces.

**2. Newly Created On-Street Parking**

The amount of off-street parking may be reduced by one space for every new on-street parking space that is created by a development as a result of street widening, dedication of additional right-of-way or easement, or other means approved by the Director of Development.

3. On-street parking spaces credited for a specific use shall not be used exclusively by that use, but shall be available for general public use at all times. No signage or actions limiting general public use of on-street spaces shall be permitted.

**D. Tree Preservation**

The number of parking spaces required may be reduced by a maximum of 5 percent of the total required parking, consistent with the provisions of Table 17.C, Parking Reduction Credit for Tree Preservation within the area proposed for site development, if the tree proposed for preservation is approved by the Director of Development and appropriate steps are taken by the developer to ensure the tree’s protection during the development process. If, however, the tree is damaged during development, no credit shall be granted. Multiple trees may be approved for credit.

**Table 17.C  
Parking Reduction Credit for Tree Preservation**

Preserved Tree Diameter at Breast Height	Number of Spaces Credited
6 inches, but less than 12 inches	2
12 inches, but less than 18 inches	3
18 inches, but less than 24 inches	4
24 inches or more	5

**Section 17.4.5 Alternative Motor Vehicle Parking Arrangements**

In order to accommodate infill development, redevelopment, and flexible parking practices within the built environment, the following alternative parking arrangements may be utilized to satisfy specific parking needs, but will not be effective until the Planning Director approves a parking plan. All parking areas shall be located within a district that permits the use that such parking serves or in a district that permits parking as a principle use.

**A. Off-Site Parking**

The Planning Director may approve the location of required parking spaces on a separate lot from the lot on which the principal use or uses are located if the off-site parking complies with the all of following standards.

1. Off-site parking spaces shall be located within 660 feet from the primary entrance of the use served. Walking distance is measured along a clear walking path along sidewalks and pathways including designated crosswalks from the primary entrance of the use to the closest section of the off-site parking lot.
2. Agreement
  - (a) A legally binding written easement or servitude between the owners of record of the properties establishing the duration and conditions associated with the off-site or shared parking must be created, approved by the Planning Director, and recorded with the East Baton Rouge Parish Clerk of Court Recorder’s Office. A copy of the new agreement must be filed prior to expiration of the current agreement.
  - (b) An off-site or shared parking agreement may be rescinded only if all required off-street parking spaces will be provided in accordance with this Chapter.
3. Ineligible Activities
 

Off-site parking may not be used to satisfy the off-street parking requirements for residential uses (except for guest parking), convenience stores or bars and lounges.



**B. Valet Parking**

The Planning Director may approve valet parking as a means of satisfying parking requirements if the valet parking meets all of the following standards:

1. Adequate assurance of the continued operation of the valet parking, such as a contractual agreement for valet services or the tenant's affidavit agreeing to provide such services, is provided;
2. An equivalent number of valet spaces are available to replace the required parking spaces. Such valet spaces do not require individual striping, and may utilize tandem or mass parking of vehicles;
3. The valet operation, if used to satisfy the requirements of this chapter, must remain in effect while the use is in operation; and,
4. If valet parking is located off premises, the off premises lot must have a valid agreement for use of the off premise parking lot(s) satisfying the standards as described above in Section 17.4.5.A.2.

- C. An alternative parking arrangement may be amended by following the same procedure required for the original approval.

**Section 17.5 Motor Vehicle Parking Design Standards**

**Section 17.5.1 General**

**A. All parking facilities shall meet the following criteria:**

1. No parking spaces shall be located within sight distance triangles.
2. No parking spaces may be permitted closer to the roadway edge or curb than ten feet.
3. When parking is proposed perpendicular to a public sidewalk or property line, barrier curbing shall be installed two feet, six inches from the sidewalk or property line to prevent the vehicle from overhanging the sidewalk or property line and ensure maintenance of the clearance requirements of the Americans with Disabilities Act.
4. All parking entrances, exits, and aisles shall have white directional arrow pavement markings with materials that meet the guidelines of the Manual on Uniform Traffic Control Devices (MUTCD). All regulatory and warning signage shall be of the type universally recognized as shown in the MUTCD.

- B. Wreckers, buses (other than school buses used primarily for transporting school children), trucks and semitrailers with more than two axles and a payload capacity of more than 3,500 pounds are prohibited from parking on the drive, in the front yard, or adjacent to any lot in the A1, A2, A2.5, A3, or A4 zoning district or between the street and a house in recognized subdivisions in the R zoning district.

**Section 17.5.2 Locational Standards for Parking Areas**

**A. Single Family Dwellings**

1. For any single family dwelling, motor vehicle parking and maneuvering areas shall not be located in any required yard adjacent to a public street (other than an alley) except in an access/driveway or on a parking area adjacent to that driveway that complies with the provisions of Section 17.5.2.A, Single Family Dwellings. Any structure designed to shield or shelter a motor vehicle that projects into any required yard shall comply with the requirements of the district.
2. Parking for single family dwellings may be permitted on drives off of an alleyway as long as the area designated for such parking is designed consistent with the dimensional requirements for parking stalls shown in Table 17.D, Standard Parking Dimensional Requirements.

**B. Uses Other than Single Family Dwellings**

Surface motor vehicle parking and maneuvering areas shall be located as follows, based on the Character Area map:

**1. All Character Areas**

A standard parking space shall be an area sufficient in size to store one automobile (see Table 17. D and 17.E) that is connected to a street or alley by an aisle and/or driveway designed in such a manner that adequate maneuvering areas are provided and backing onto or off the street is prohibited.

**2. Suburban**

Parking shall not be located in any required yard adjacent to a public street (other than an alley) or any required buffer yard or open space.

**3. Walkable, Urban, Downtown**

- a. No parking shall be located in any required buffer yard or open space.
- b. Parking shall not be located in any required yard adjacent to a public street except when a wall, hedge, or decorative fence is located along the property line abutting the street which is not less than three feet in height, screens the parking area, and defines the edge of the pedestrian corridor as required in Section 18.3.4, Street Yard.

**Section 17.5.3 Design Standards for Parking Areas**

**A. Single Family Dwellings**

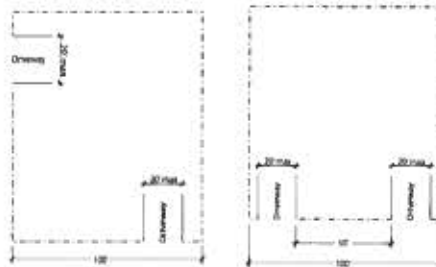
**1. Surfacing**

- a. All driveways, accesses, and parking areas must be paved with durable all-weather materials, such as concrete or asphalt, and designed to maintain proper drainage. Alternative materials meeting the criteria below may be approved by the Department of Development with a paved apron:

(1) in the Rural Character Area;

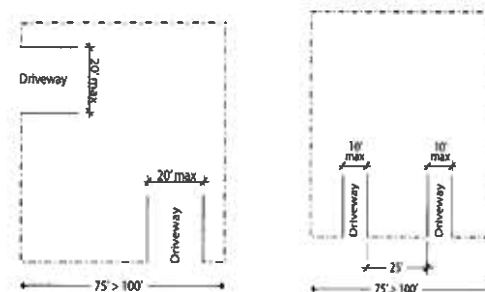
- (2) in areas outside the city limits; or,
  - (3) within the critical root zone of a qualifying tree as outlined in the Landscape Chapter of this ordinance.
- b. All single family detached dwellings shall be permitted to construct driveways that consist of two concrete wheel strips, each of which is at least 18 inches wide and at least 20 feet long. Groundcover shall be planted between the strips; gravel or loose rock between the strips shall be prohibited.
2. Driveway or Access
- Any surface, as approved by the Development Director, used for parking or maneuvering a vehicle and which is located in any required yard abutting a public street shall be limited to a driveway or access installed perpendicular or nearly perpendicular to the abutting street. The width and number of such driveways or accesses per zoning lot shall be limited as follows:
- a. On lots at least 100 feet wide
    - (1) No more than two, with a maximum width of 20 feet each and located on separate streets if a corner lot.
    - (2) No more than two, with a maximum width of 20 feet each and separated by at least 50 feet of street frontage if located on the same street.

**Figure 17.1**  
**Driveway Access on Lots at Least 100 Feet Wide**



- b. On lots at least 75 feet wide but less than 100 feet wide

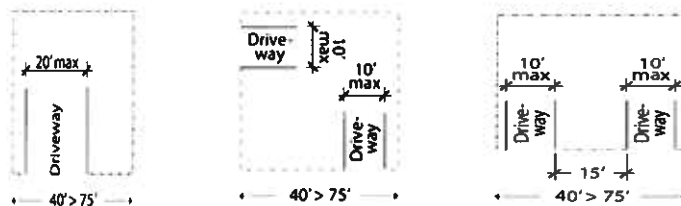
**Figure 17.2**  
**Driveway Access on Lots at 75 to 100 Feet Wide**



- (1) No more than two, with a maximum width of 20 feet each and located on separate streets if a corner lot.

- (2) No more than two, with a maximum width of 10 feet each and separated by at least 25 feet of street frontage if located on the same street.
- c. On lots at least 40 feet wide but less than 75 feet wide
- (1) No more than one, with a maximum width of 20 feet.
  - (2) No more than two, with a maximum width of ten feet each and located on separate streets if a corner lot.
  - (3) No more than two, with a maximum width of ten feet each and separated by at least 15 feet of street frontage if located on the same street.

**Figure 17.3**  
**Driveway Access on Lots at 40 to 75 Feet Wide**

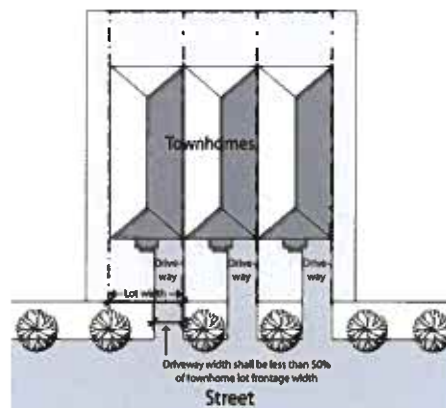


- d. On lots at least 30 feet wide but less than 40 feet wide, no more than one, with a maximum width of 10 feet.
- e. On lots less than 30 feet wide, no more than one, with a maximum width of ten feet. If located on a corner lot, driveway should be located along the longer street frontage.

**B. Townhouses and Duplex Dwellings**

All design standards applicable to parking areas, driveways and accesses for single family homes set forth above shall likewise apply to townhouses and duplex dwellings with the additional limitation that no driveway or access shall occupy more than 50 percent of the front yard of townhouses or duplexes located in the Walkable, Urban or Downtown Character Areas.

**Figure 17.4**  
**Driveway Access for Townhouses and Duplexes**



C. All Other Uses

1. Surfacing

All driveways, accesses, and parking areas must be paved with durable all-weather materials, such as concrete or asphalt, and designed to maintain proper drainage. Alternative materials meeting the criteria below may be approved by the Department of Development with a paved apron:

- a. in the Rural Character Area; or,
- b. within the critical root zone of a qualifying tree as outlined in the Landscape Chapter of this ordinance.

2. Landscaping and Screening

Landscaping and screening of parking areas shall be provided in accordance with the requirements of Sections 18.3.4, Street Yards, and 18.3.5, Parking Lot Landscaping.

3. Lighting

All parking area lighting shall be provided in accordance with the requirements of Section 14.6, Outdoor Lighting.

4. Dimensions of Parking Spaces

- a. All minimum requirements as to size, angle, and placement of parking spaces located on surface lots shall be as set forth in Tables 17.D, Standard Parking Dimensional Requirements, or 17.E, Compact Parking Dimensional Requirements, and illustrated in Figure 17.5, Minimum Parking Dimensions, unless alternative dimensions indicated on a parking plan designed and sealed by a licensed design professional have been approved by the Director of the Department of Development.
- b. Where different angles of parking spaces are proposed, the greater aisle width required as identified in Table 17.D, Standard Parking Dimensional Requirements and 17.E, Compact Parking Dimensional Requirement shall be provided.

**Table 17.D  
Standard Parking Dimensional Requirements**

Parking Angle (A)*	Stall Width (B)	Stall Depth (C)	Aisle Width – parking on one side (D)	Aisle Width – parking on both sides (D)	Stall Distance – Curb to Aisle (E)
0°	9 ft	22 ft	12 ft (one-way) 20 ft (two-way)	12 ft (one-way) 20 ft (two-way)	9.0 ft
45°	9 ft	18 ft	13 ft (one-way)	13 ft (one-way)	18.4 ft
60°	9 ft	18 ft	18 ft (one-way)	18 ft (one-way)	19.6 ft
70°	9 ft	19 ft	20 ft (one-way)	20 ft (one-way)	20.6 ft
90°	9 ft	18 ft	22 ft (two-way)	24 ft (two-way)	18.0 ft

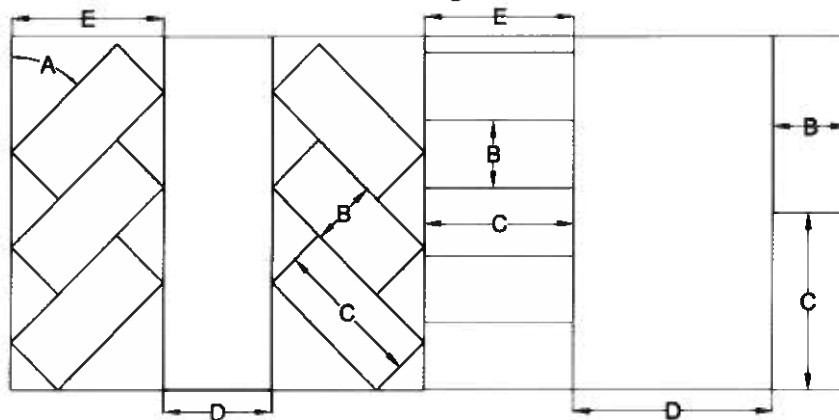
\* Letters correspond with the locations shown in Figure 17.5, Minimum Parking Dimensions.

**Table 17.E  
Compact Parking Dimensional Requirements**

Parking Angle (A)*	Stall Width (B)	Stall Depth (C)	Aisle Width – parking on one side (D)	Aisle Width – parking on both sides (D)	Stall Distance – Curb to Aisle (E)
0°	8.5 ft	18.0 ft	11 ft (one-way) 20 ft (two-way)	11 ft (one-way) 20 ft (two-way)	8.5 ft
45°	7.5 ft	16.5 ft	12 ft (one-way)	12 ft (one-way)	17.0 ft
60°	7.5 ft	16.5 ft	16 ft (one-way)	16 ft (one-way)	18.0 ft
70°	7.5 ft	17.0 ft	18 ft (one-way)	18 ft (one-way)	18.5 ft
90°	7.5 ft	16.5 ft	19 ft (two-way)	21 ft (two-way)	16.5 ft

\* Letters correspond with the locations shown in Figure 17.5, Minimum Parking Dimensions.

**Figure 17.5  
Minimum Parking Dimensions**



- c. The minimum dimensional requirements of parking spaces in a structured parking facility and shown on a parking plan designed and sealed by a professional engineer shall be established by the Director of the Department of Development.
- d. Any parking area may include spaces designed for compact vehicles, subject to the following limitations:
  - (1) No more than 20% of the number of minimum required parking spaces may be satisfied by providing compact spaces.
  - (2) Each compact space shall be clearly identified with markings placed on the surface of the parking space and with a sign restricting it for compact vehicles only.

## **Section 17.6 Bicycle Parking**

### **Section 17.6.1 Minimum Bicycle Parking Requirements**

#### **A. Parking Spaces**

Except where indicated otherwise in this ordinance, every use shall provide one bicycle parking space for every 20 motor vehicle parking spaces provided to a maximum of 50 bicycle parking spaces. The Planning Director may approve a reduction in the amount of bicycle parking per Section 17.4.1.B., Alternative Minimum Parking.

**B. Exemptions**

No bicycle parking spaces shall be required for any of the following:

1. Any single family dwelling, two-family dwelling, or group home.
2. Any industrial use.
3. Any use in the Rural Character Area.

**C. Clustered Bicycle Parking**

Locations for bicycle parking spaces required for more than one use on the same lot may be clustered if the total number of required bicycle parking spaces for each use is satisfied and the parking area is located within 125 feet from the main entrance of the principal building as measured along the most direct and safe pedestrian access route.

**Section 17.6.2 General Requirements**

**A. Maneuvering Areas**

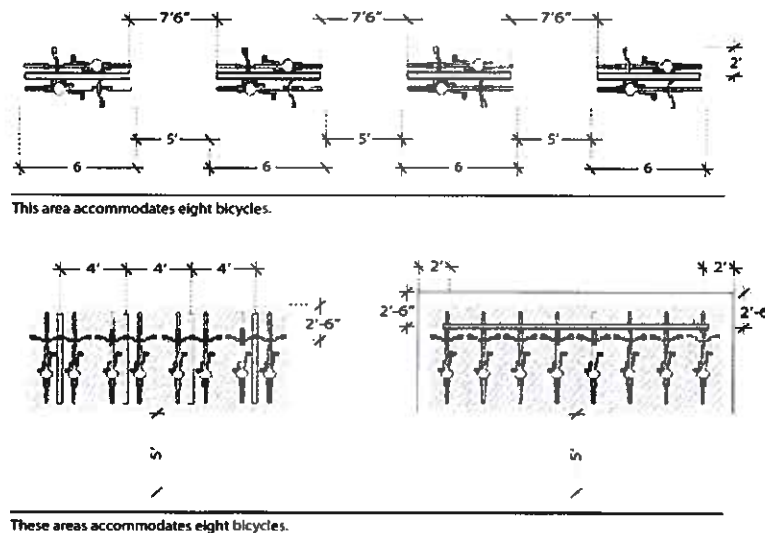
All required bicycle parking must meet all of the following minimum criteria:

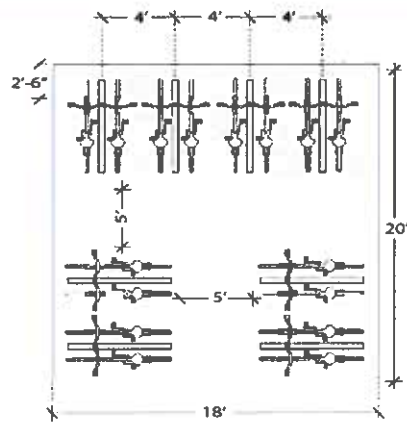
1. The parking area must accommodate the maneuvering standards set forth in the Figure 17.6, below, or, for bicycle parking provided with vertical space-saving racks, as set forth in Figure 17.7, below.
2. When in use, each parking space must be accessible without moving another, parked bicycle.
3. The maneuvering area provided alongside or behind the bicycle parking spaces may extend into portions of a public right-of-way but not those portions established as a motor vehicle lane, motor vehicle drive aisle, motor vehicle parking space, or any landscaped area.

**B. Surfacing**

The surface of the bicycle parking area shall be improved, as approved by the Director of the Department of Development, with a hard surface and shall not include any gravel, dirt, sand or turf.

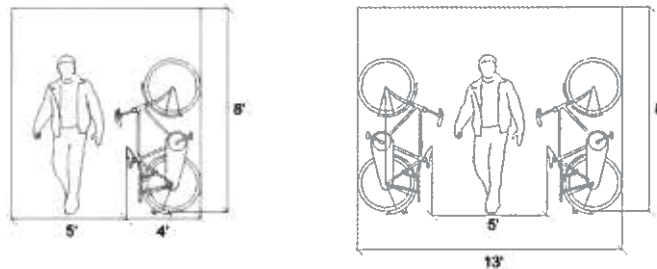
**Figure 17.6  
Minimum Maneuverability Criteria for Bicycle Parking**





These areas accommodates 16 bicycles.

**Figure 17.7**  
**Minimum Maneuverability Criteria for Vertical Racks**



**C. Visibility**

Whenever the bicycle parking area is not visible from either the street or the entrance of the principal building, a sign shall be posted at the entrance of the principal building indicating the location of the bicycle parking.

**Section 17.6.3 Standards for Bicycle Parking Facilities**

All bicycle parking facilities or racks shall meet the following construction and location standards:

- A. The facility or rack shall accommodate securing a bicycle using an industry-standard bike lock in compliance with the standards at the time of installation. The bicycle must be able to be attached to the rack by the bicycle frame and one wheel using a standard bicycle lock without removing a wheel.
- B. The facility or rack shall be securely anchored to the ground or to a structural element of a building or structure.
- C. Each space on the facility or rack shall be sufficient to accommodate a bicycle at least six feet in length.
- D. The parking area shall be located within 125 feet of the main entrance to the building as measured along the most direct pedestrian access route using sidewalks and pathways, including designated crosswalks.

**Section 17.7 Vehicle Stacking**

Commercial Drive-Thru facilities for which vehicle stacking spaces are required must meet the minimum dimensional standards set forth in Table 17.F, Vehicle Stacking.



**Table 17.F  
Vehicle Stacking**

<b>Type of Activity</b>	<b>Required Stacking Spaces</b>	<b>Start Point for Stacking Spaces</b>
Automated teller machine	2	Teller machine
Bank teller lane	2	Teller window/tube
Dry-cleaning/laundry	3	Cleaner/laundry window
Pharmacy	3	Pharmacy window
Food service	6	Order box/speaker
	4*	Pick-up window
Other	To be determined by Planning Director. Such determination shall consider any study prepared by a registered engineer having expertise in transportation engineering and provided by the special exception applicant.	
* These spaces are required in addition to the stacking spaces required to be located behind the order box/speaker and shall be located between the pickup window and the order box/speaker.		

**Section 17.8 Off-Street Loading**

**Section 17.8.1 General Requirements**

**A. Location of Loading Areas and Docks**

1. All required loading areas and docks shall be located on the same lot as the use served unless a central loading facility is incorporated as part of a single development.
2. All loading docks that abut a residential zoning district or are visible from a public right-of-way shall be completely screened by building walls, a solid concrete or masonry wall, or a door designed to be compatible with the principal building that it serves. The screening wall shall not be less than six nor more than eight feet in height.
3. No loading dock shall be located within 30 feet of the nearest point of intersection of any two streets.
4. No loading areas or docks shall be located in a required front or side yard abutting a residential zoning district.

**B. Dimensions of Loading Docks**

1. Unless otherwise specified, a required loading dock shall be at least 12 feet in width by at least 35 feet in length exclusive of aisle and maneuvering space, and shall have a vertical clearance of at least 19 feet.
2. Maneuvering aprons for docks shall be at least 60 feet in length.
3. Access lanes for docks, shall be 14 feet in width for one-way lanes and 24 feet in width for two-way lanes. Space dedicated for access lanes may also be considered as space for the maneuvering apron.

**C. Access**

Each required loading area or dock shall be designed with appropriate means of vehicular access to a street or alley in a manner which will least interfere with traffic movement, shall be separated from required customer and employee parking, and shall be subject to approval by the Director of the Department of Development.

**D. Surfacing**

All open loading areas or docks shall be surfaced with a dustless, all-weather material capable of bearing a live load of 200 pounds per square foot in accordance with standards established by the Director of the Department of Development.

**E. Utilization**

Space allocated to any loading use shall not be used to satisfy the space requirements for any motor vehicle parking area.

**F. Central Loading**

Central loading facilities may be substituted for loading areas or docks on individual lots within a development provided that the following criteria are met:

1. Each lot served shall have direct access to the central loading area or dock without crossing streets or alleys at-grade.
2. The total number of loading areas or docks provided shall meet 75 percent of the minimum requirements herein specified for each of the uses served.
3. No lot served by the central loading facility shall be located no more than 660 feet from it.
4. Any tunnel or ramp connecting the central loading area or dock with the lot served shall be a minimum of seven feet in width and have a vertical clearance of not less than seven feet.

**Section 17.8.2 Required Loading Areas**

Except where indicated otherwise in this ordinance, every use listed in Table 17.G, Off-Street Loading Requirements, shall provide the identified number of loading areas or docks with each facility being at least 12 feet wide and 35 feet deep with a vertical clearance of 19 feet.

**Section 17.8.3 Receiving Areas**

Uses that require loading facilities that are located in buildings with less floor area than the minimum described in Table 17.G, Off Street Loading Requirements, shall provide adequate receiving facilities accessible by motor vehicle off any adjacent alley, service drive, or open space on the same zoning lot

**Table 17.G  
Off-Street Loading Requirements**

USES	Gross Floor Area of all Buildings or Structures Served (in square feet)	Number of Loading Areas
<b>RESIDENTIAL USES (only those listed below)</b>		
Nursing Home, and Continuing Care Retirement Community	Over 10,000	1
<b>OFFICE USES</b>		
All office uses	10,000 – 100,000	1
	Each additional 100,000 up to 500,000	1
<b>COMMERCIAL USES (only those listed below)</b>		
Retail Goods Establishment, (wholesale)	5,000 – 10,000	1
Hotel/Motel	10,000 – 100,000	1
	each additional 100,000	1
Theater	10,000 – 25,000	1
	each additional 50,000	1
<b>PUBLIC AND CIVIC USES (only those listed below)</b>		
Amphitheater, Arena, Stadium, Conference Center	Over 10,000	1
Hospital, Educational Facility	10,000 – 100,000	1
	Each additional 100,000	1
<b>INDUSTRIAL USES (only those listed below)</b>		
Manufacturing, Heavy and Light, and Warehouse/Wholesale	5,000 – 10,000	1
	10,000 – 40,000	1
	40,000 – 100,000	2